

Puppy Dog Days

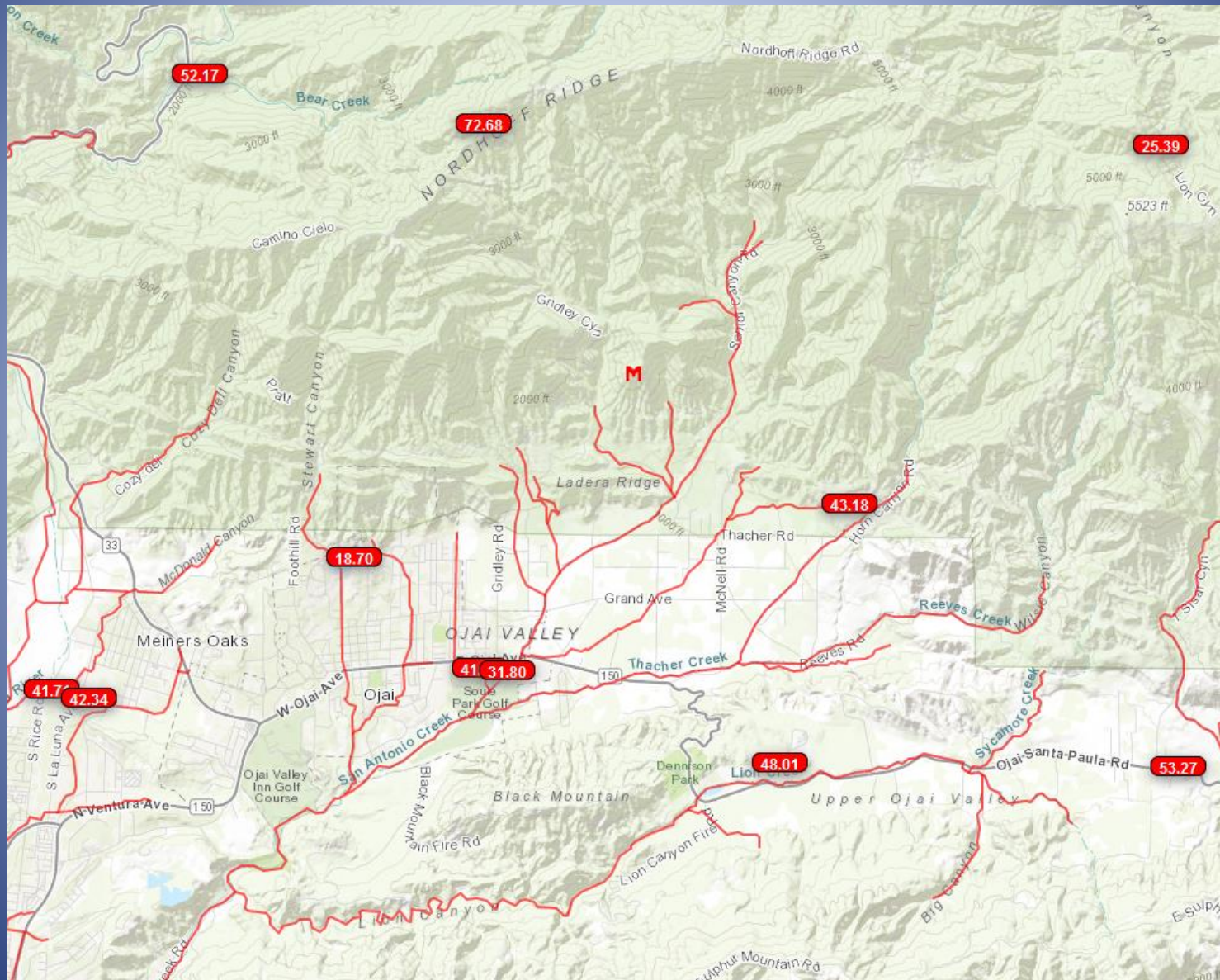
Ojai Basin conditions, July 2023

OBGMA
Ojai, California

Jordan Kear, PG, CHG
27 July 2023



Year to Date Rainfall Totals



How much is this?

41.43 inches on valley floor to date

72.74 inches on ridgetop

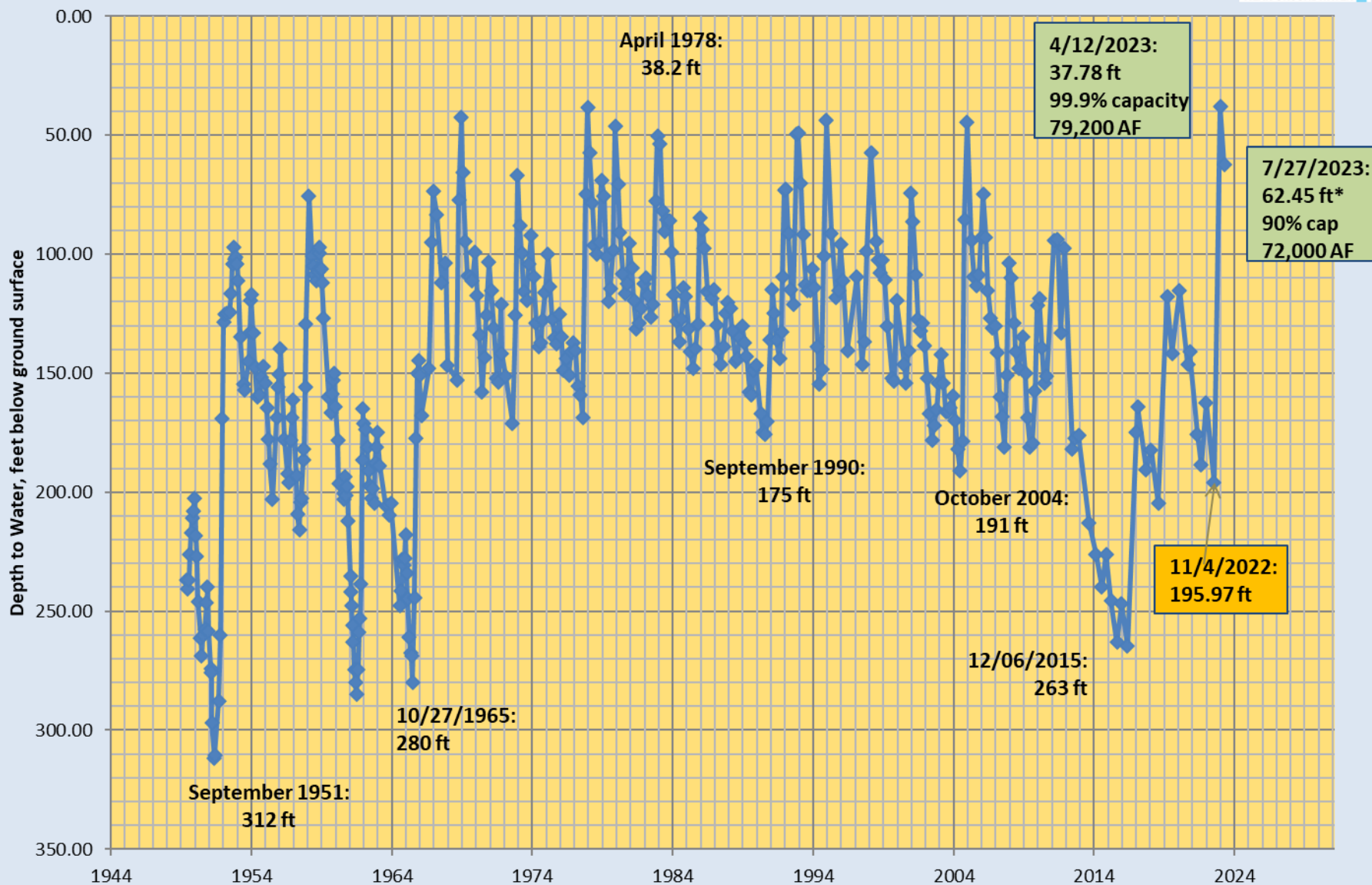
Measurable rain every month but April & July

<u>Ojai #30</u>			
Period	1906-2020		P
Rank	Year	Rain	R
1	1997-98	49.20	
2	1977-78	48.60	
3	1968-69	46.61	
4	1940-41	45.24	
5	2004-05	43.84	
6	1982-83	43.06	
	Normal	21.32	

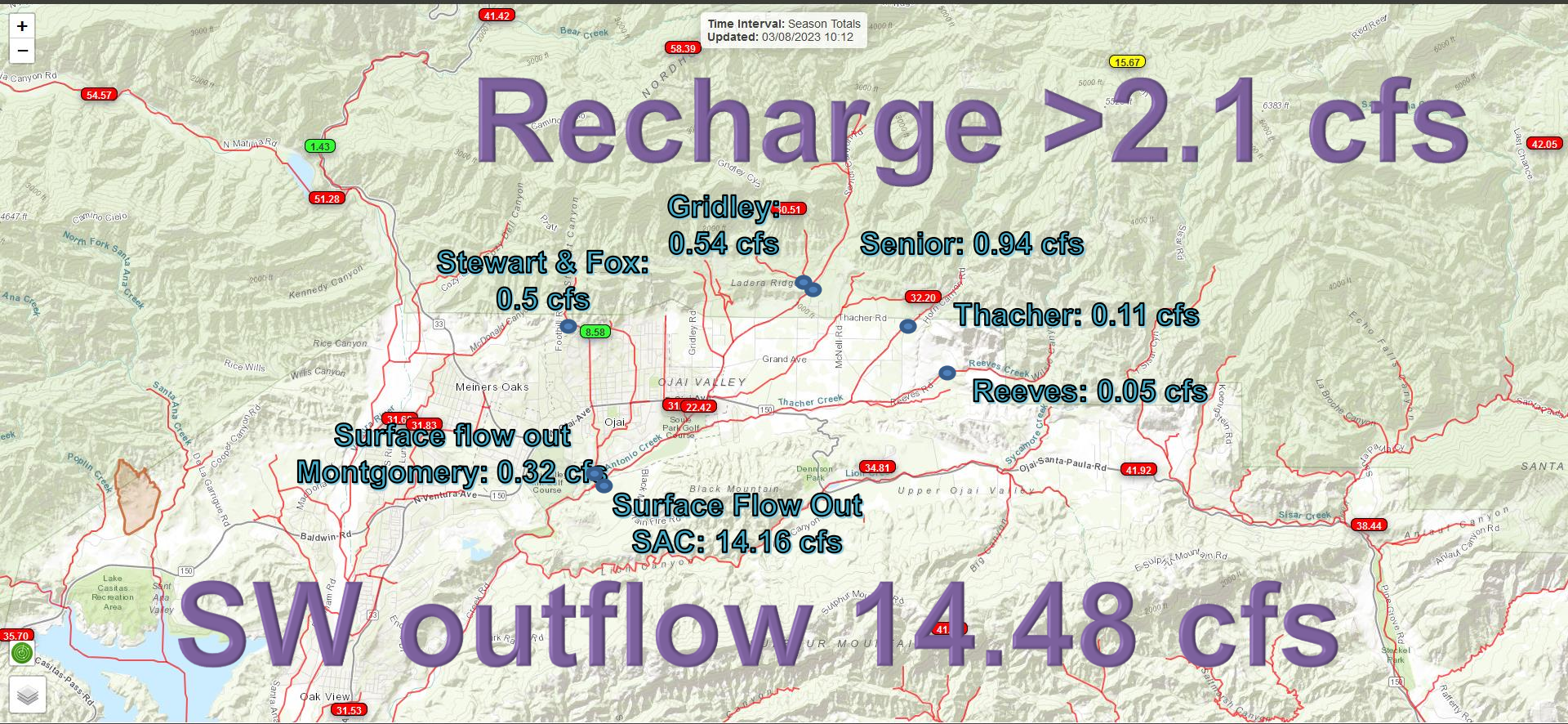
How has the basin responded?

- Surface water continuous flow from Late December through late January
- Continuous flow returned with February 24 storms
- Likely full with a peak on April 13 in places
- Historic High water levels?
- All streams break discontinuous by mid-June
- Some wells continue to flow artesian at end of July

Depth to Water: Ojai Basin Key Well Area 04N/22W-5L8 & 5L5 (Carne and Grand)



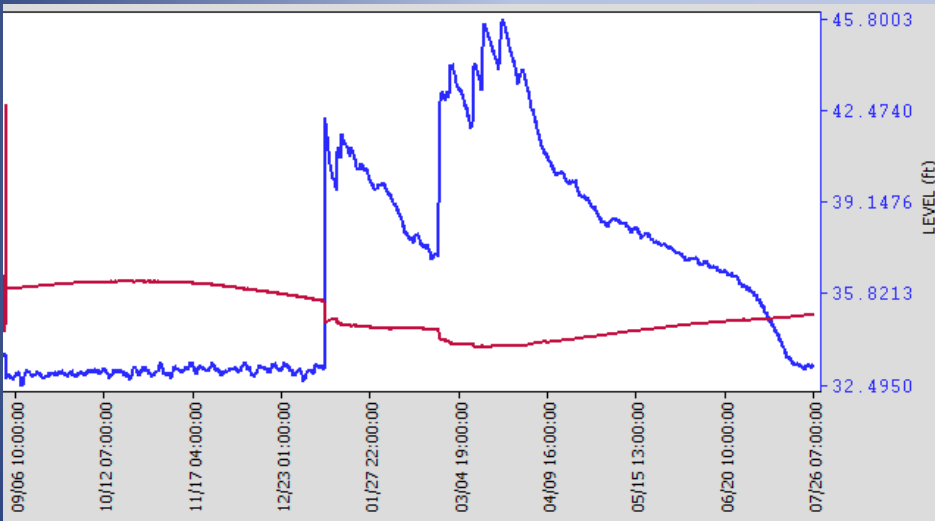
Balance 26 July 2023



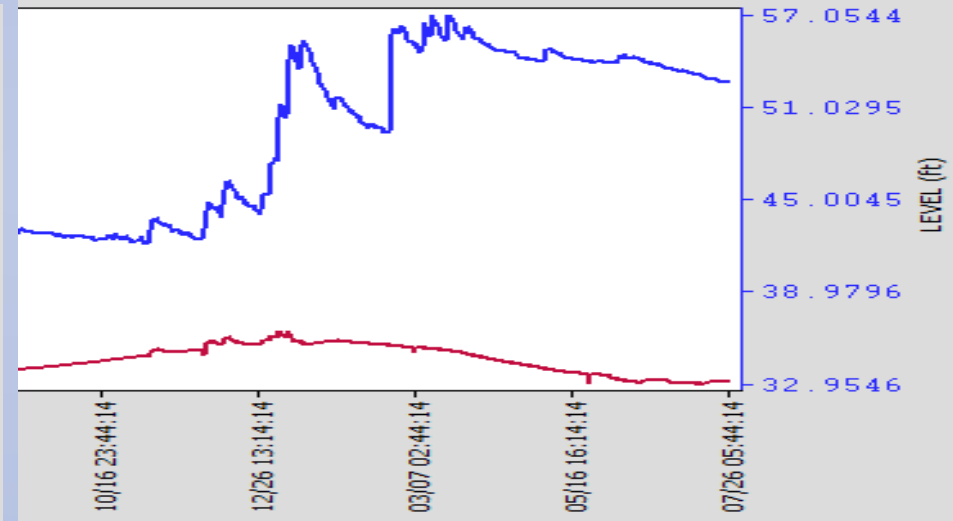
Artesian Wells, Nuisance Waters, and Perched System

Perched system

Northern portion dries



Southern portion receives







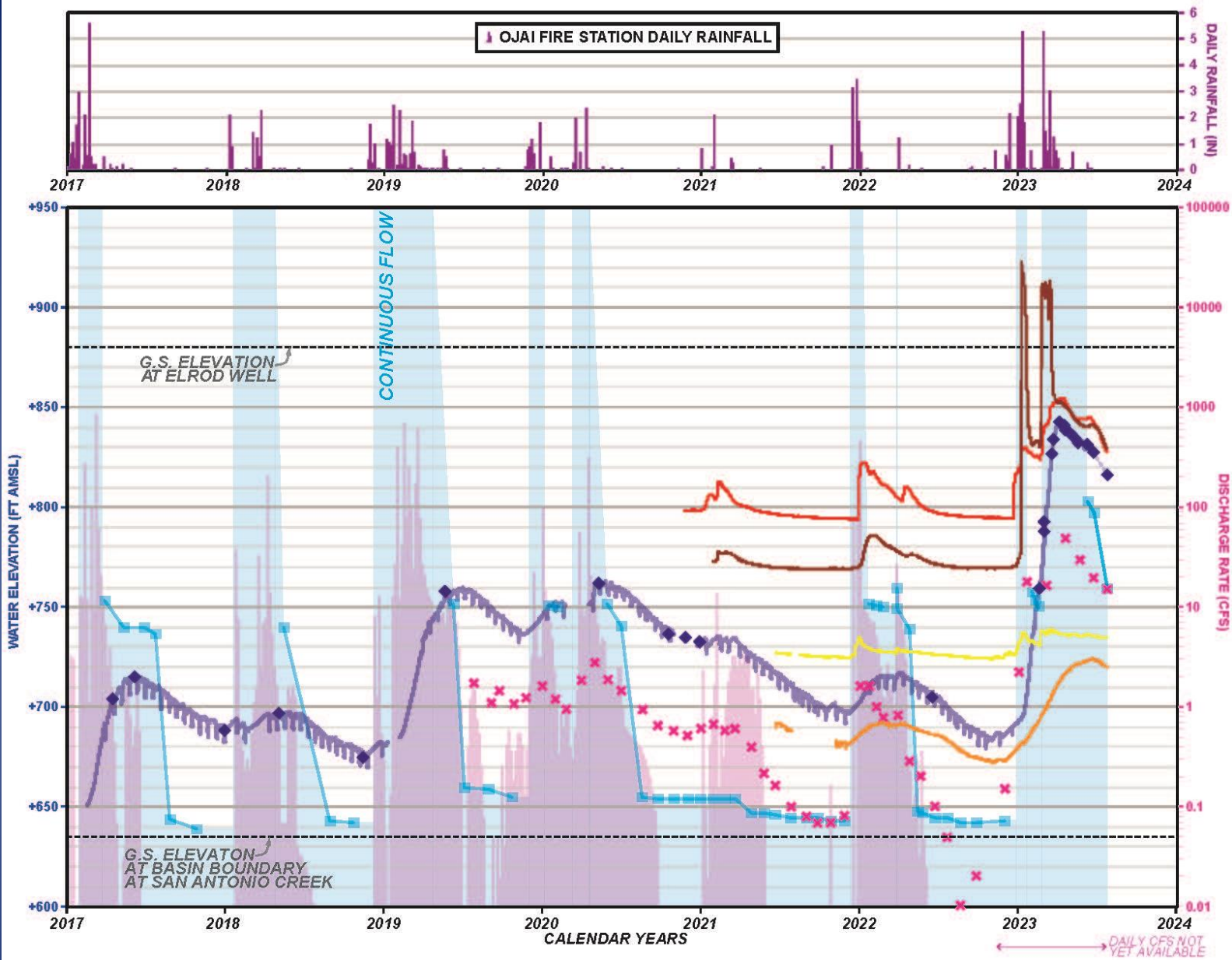








OJAI FIRE STATION DAILY RAINFALL



- | | |
|--|-----------------------------|
| — ELROD WELL LEVEL (LOGGER) ◆ ELROD WELL LEVEL (SOUNDER) | SOUTH-CENTRAL DDMW (LOGGER) |
| — POINT OF DAYLIGHTING LOWER SAN ANTONIO CREEK FLOW | — PERCHED (14-24' perf.) |
| × S.A. CREEK INSTANT. DISCHARGE (CFS) AT OJAI BASIN OUTFLOW | — MAIN (288-328' perf.) |
| █ S.A. CREEK AVG. DAILY DISCHARGE GAUGE (CFS) NEAR VENTURA RIVER | SACSGRP DDMW (LOGGER) |
| | — 190-210' perf. |
| | — 255-295' perf. |

Forward

- Better estimates of perched system aquifer
 - Storativity and transmissivity
 - Extent and gradient
 - *policy of forbearance*
- Water quality in wells and creeks
- Replace logger in SAC near discharge