

# Grateful for Groundwater

Ojai Basin conditions, November 2023

OBGMA

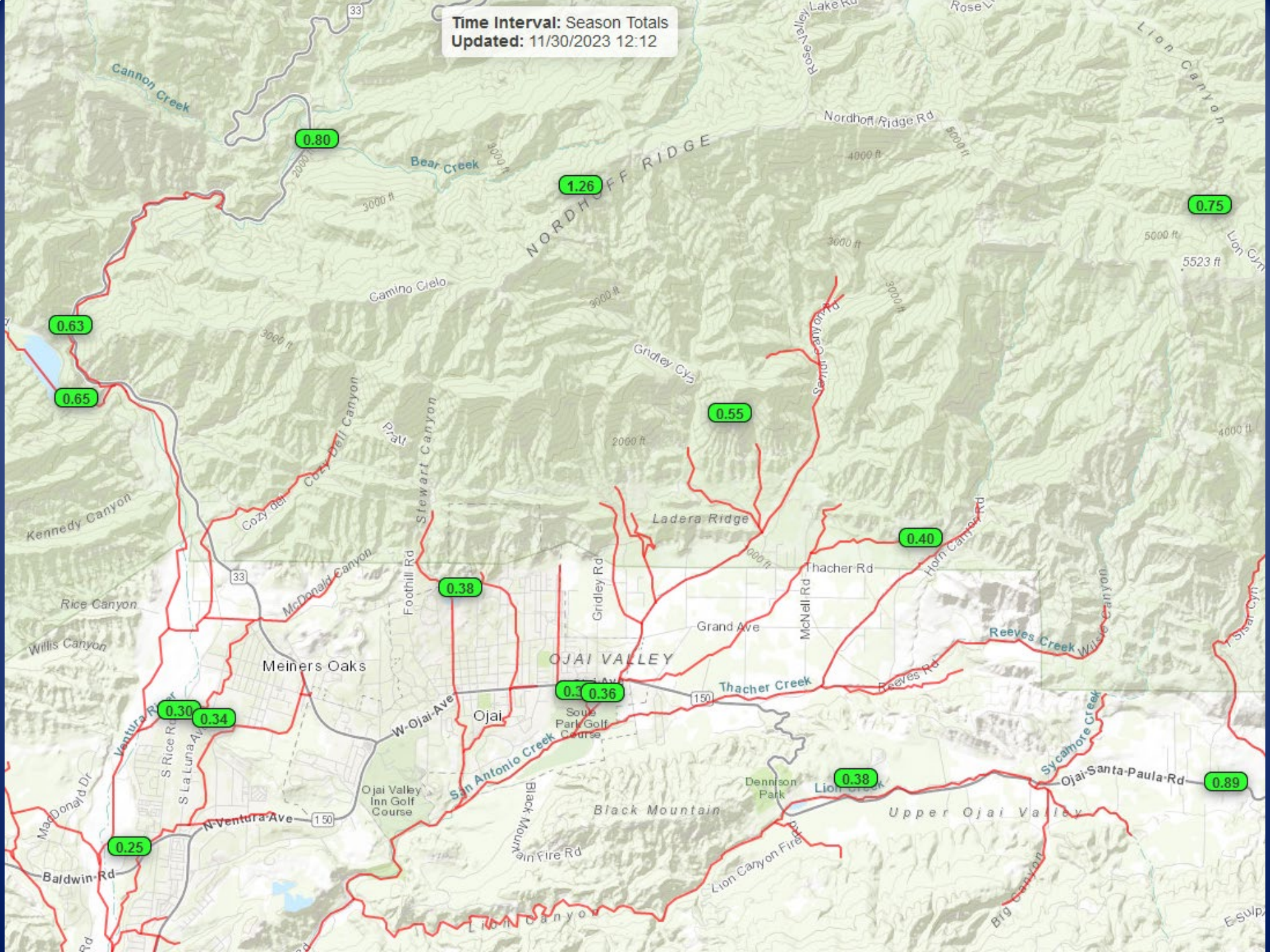
Ojai, California

Jordan Kear, PG, CHG

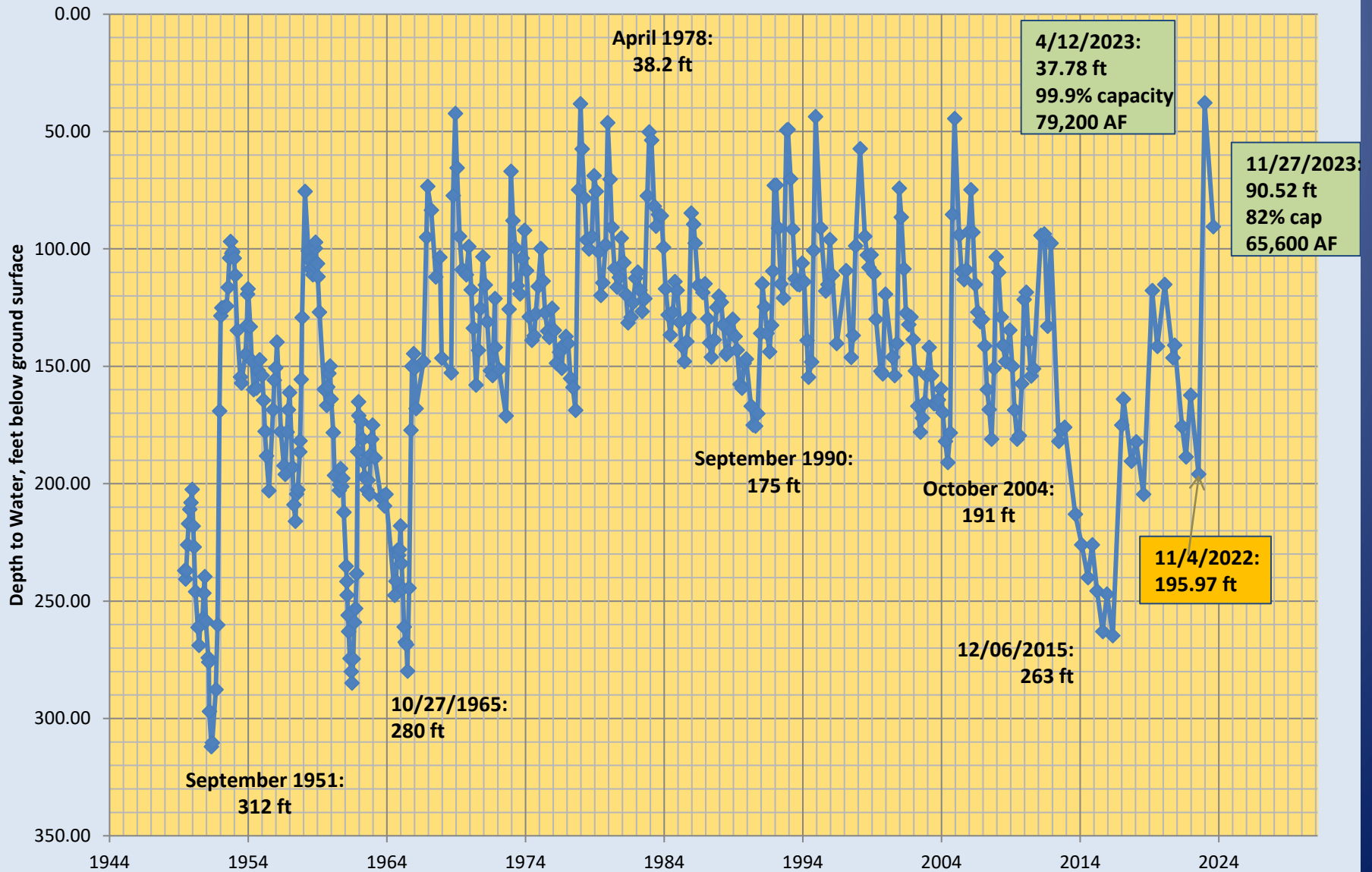
30 November 2023



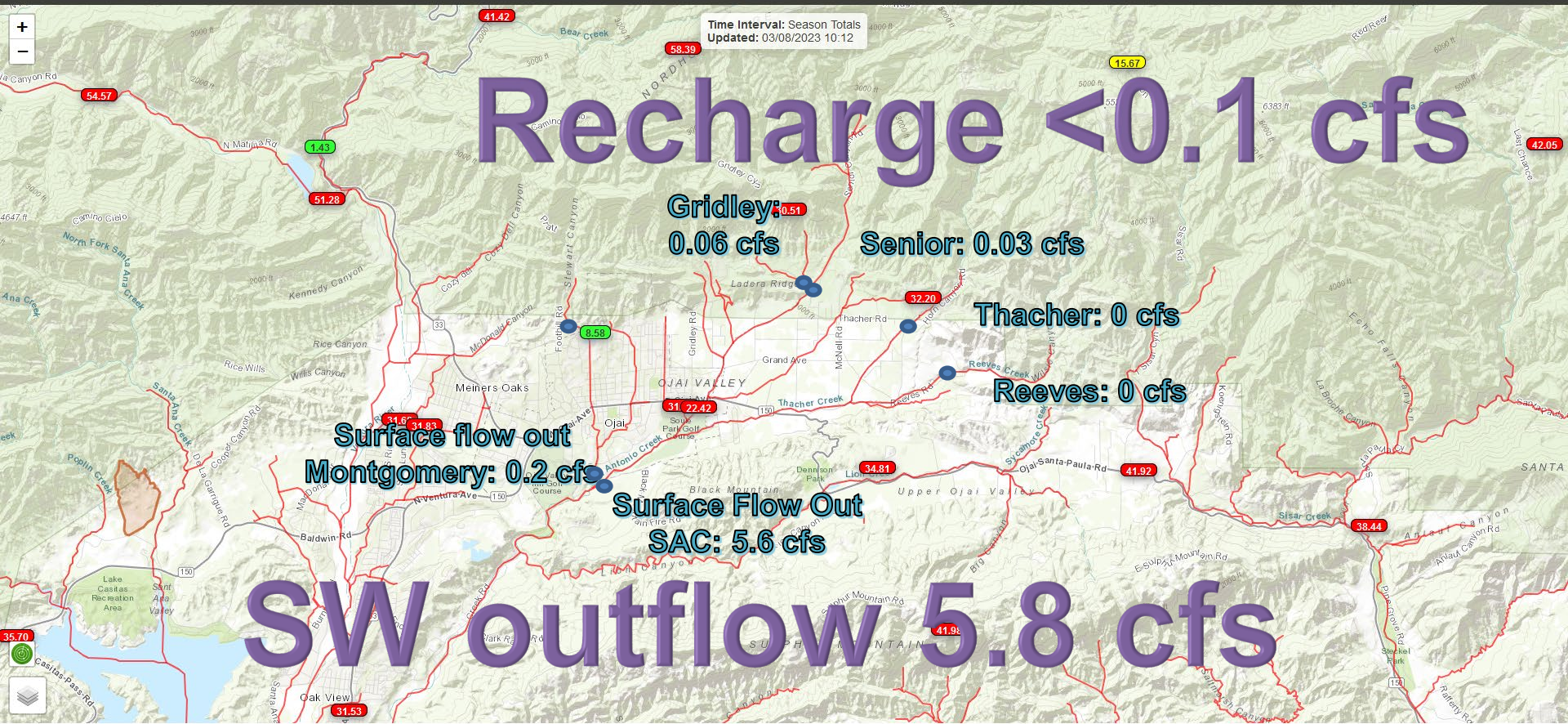
Time Interval: Season Totals  
Updated: 11/30/2023 12:12



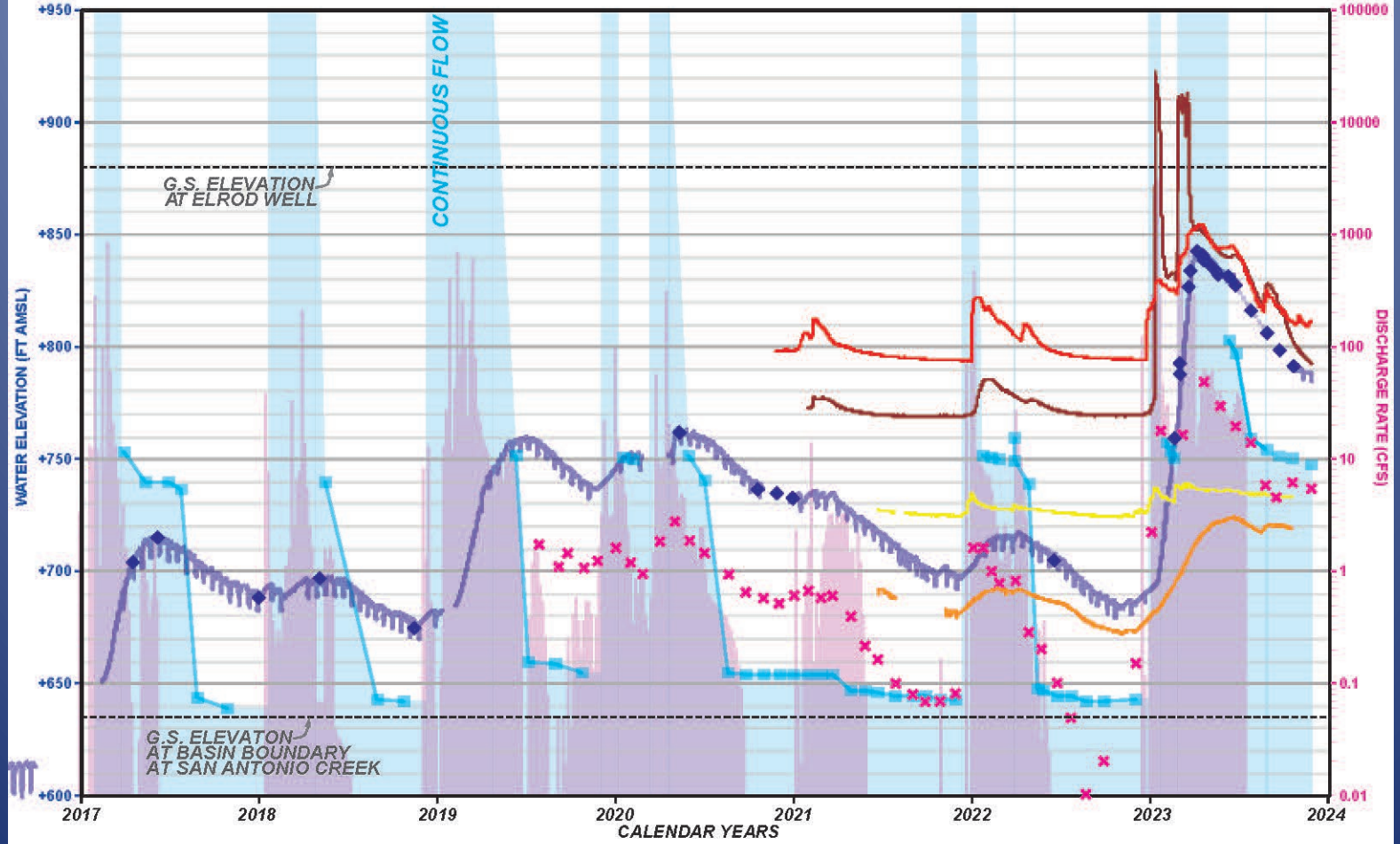
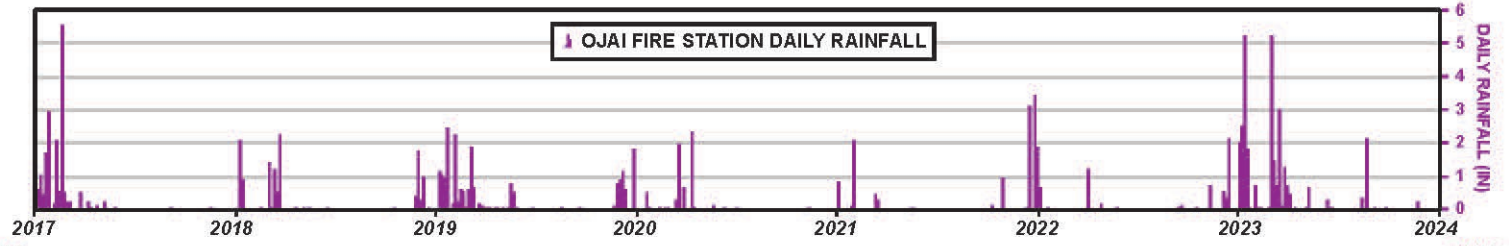
# Depth to Water: Ojai Basin Key Well Area 04N/22W-5L8 & 5L5 (Carne and Grand)



# Balance 27 November 2023



Artesian Wells, Nuisance Waters, and Perched System



- |  |                              |                             |
|--|------------------------------|-----------------------------|
| — ELROD WELL LEVEL (LOGGER)                                      | ◆ ELROD WELL LEVEL (SOUNDER) | SOUTH-CENTRAL DDMW (LOGGER) |
| — POINT OF DAYLIGHTING LOWER SAN ANTONIO CREEK FLOW              |                              | — PERCHED (14-24' perf.)    |
| × S.A. CREEK INSTANT. DISCHARGE (CFS) AT OJAI BASIN OUTFLOW      |                              | — MAIN (288-328' perf.)     |
| █ S.A. CREEK AVG. DAILY DISCHARGE GAUGE (CFS) NEAR VENTURA RIVER |                              | SACSGRP DDMW (LOGGER)       |
|  |                              | — 190-210' perf.            |
|  |                              | — 255-295' perf.            |













