

# Select Action Items from the OBGMA 2018 GWMP Update

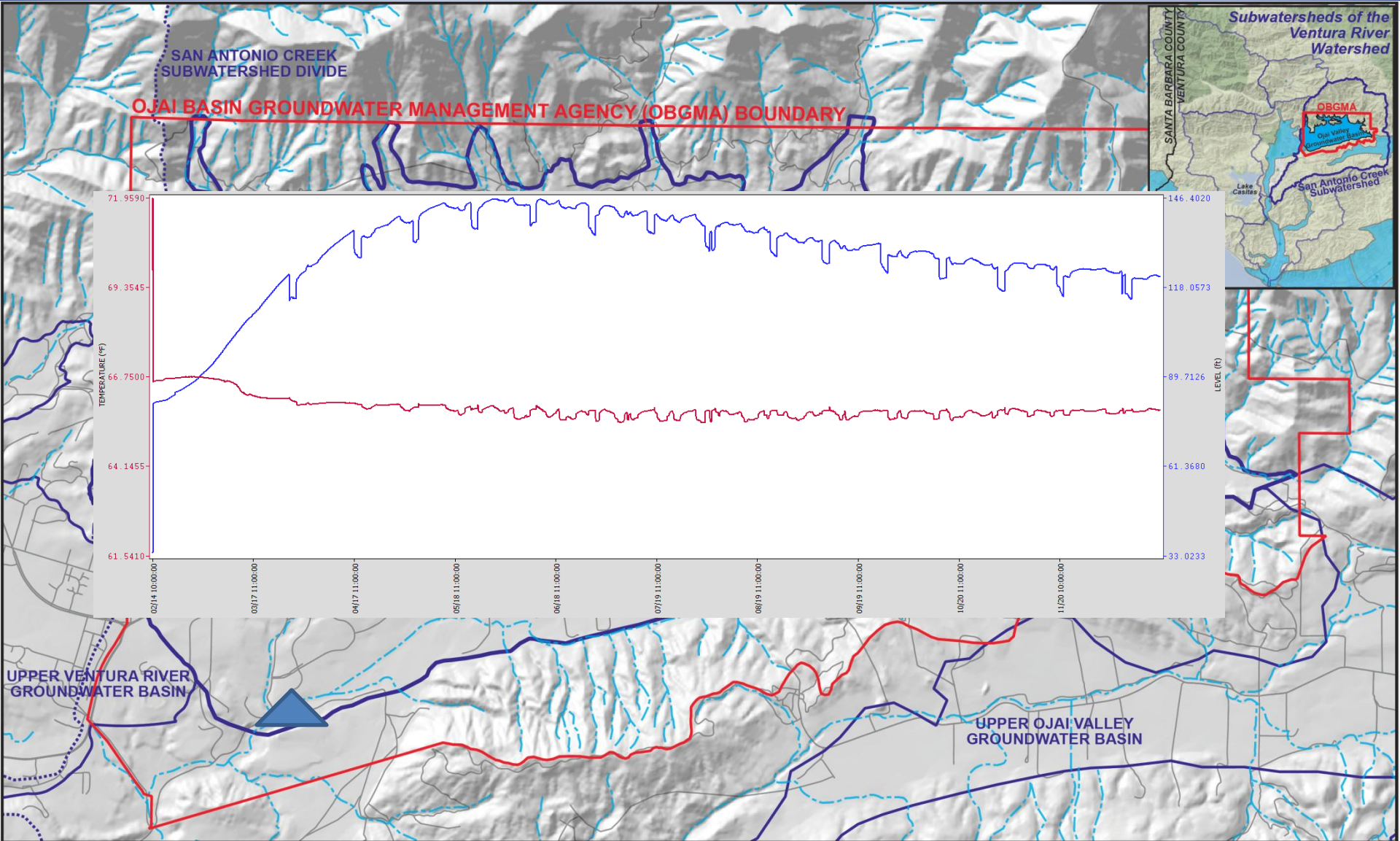
OBGMA

Jordan Kear, PG, CHG

25 January 2018



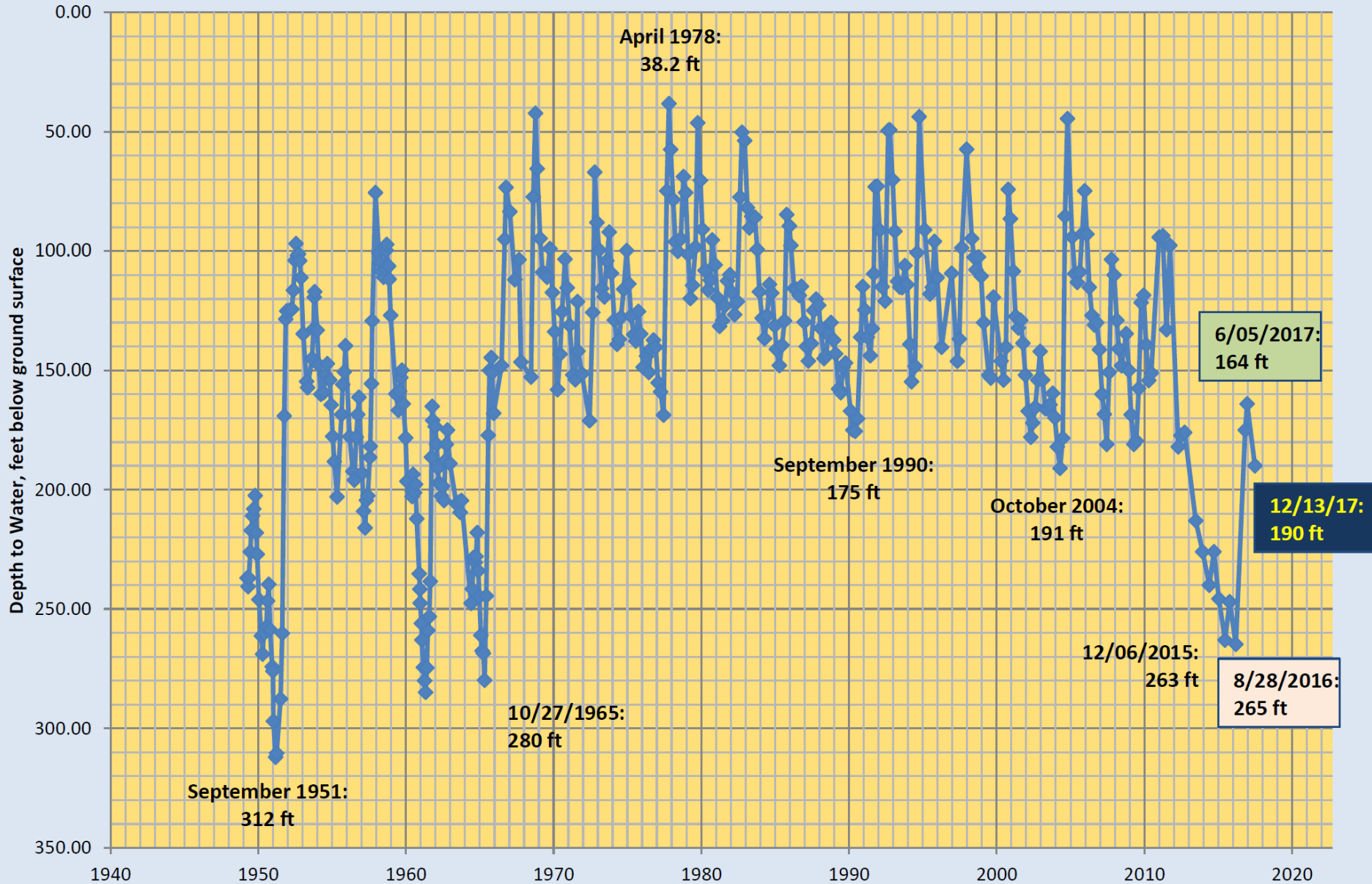
- Basin Conditions
- GWMP Action items
  - InSIDE program
  - DDMW near discharge side
    - Recharge in town
  - Contour farming conversions
    - Summer is for pools



References: Ventura County  
 USGS National Elevation Dataset/  
 National Hydrography Dataset



# Depth to Water: Ojai Basin Key Well 04N/22W-5L8 (Carne and Grand)

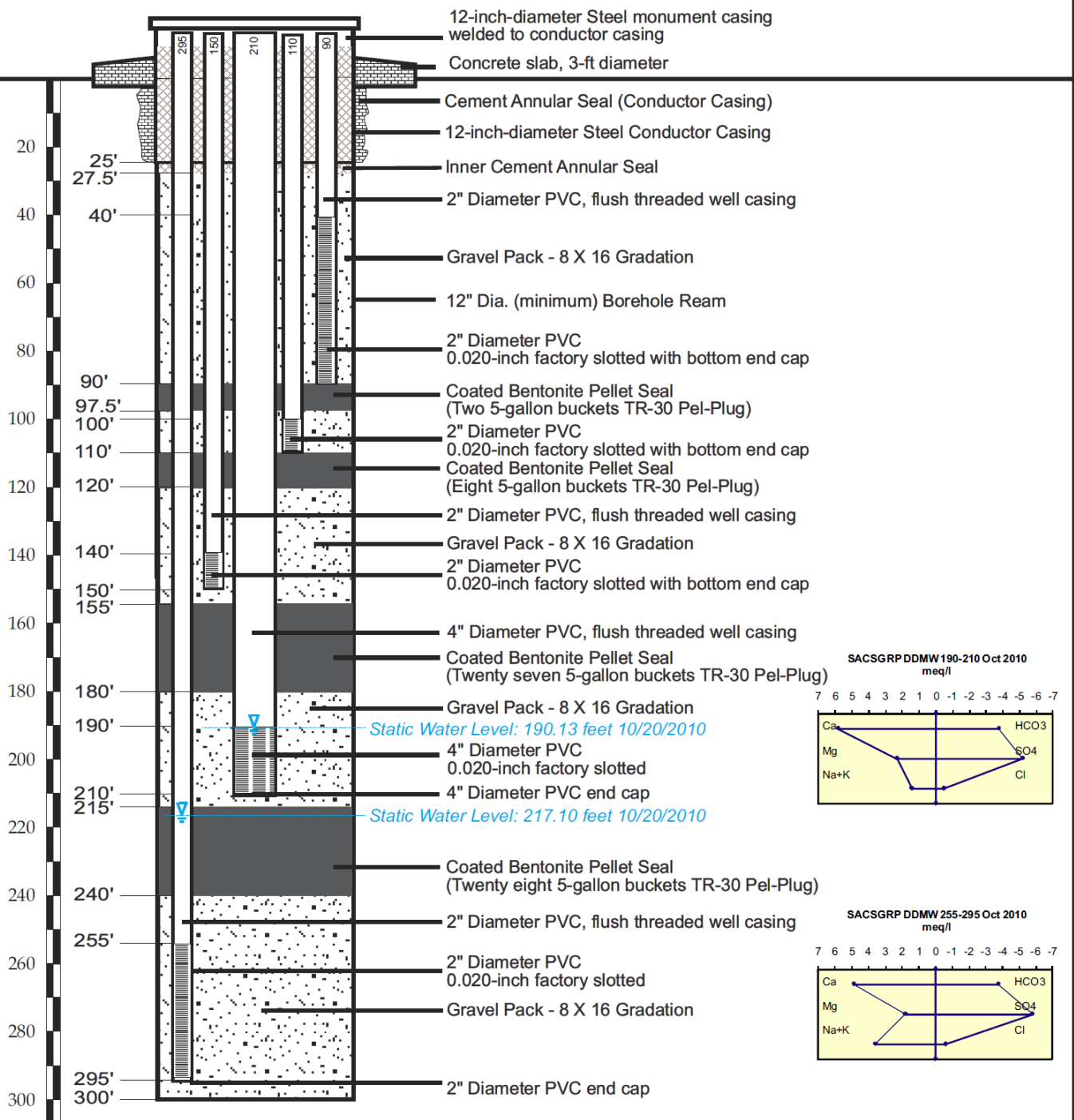




# InSIDE Program

- Invasive
- Species
- Identification
- Eradication





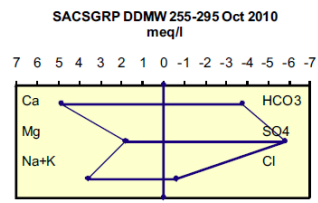
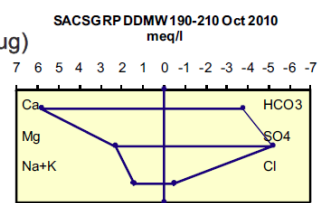
Well Head Diagram - Plan View

# DDMW

Add near lower portion Of Basin (Hansen Yard) Or City facility

Intended to detail Stratified aquifer Response to:

- Precipitation
- Pumping
- Discharge



## Recharge in Town

Provides shallow aquifer recharge primarily for stream flow exfiltration

Maximize urban action

Maximize public awareness

Multi-purpose (amphitheater, skatepark)

Flood control component

City property/partnership

Streets, parks, parking areas could be incorporated, among several other facilities...endless possibilities

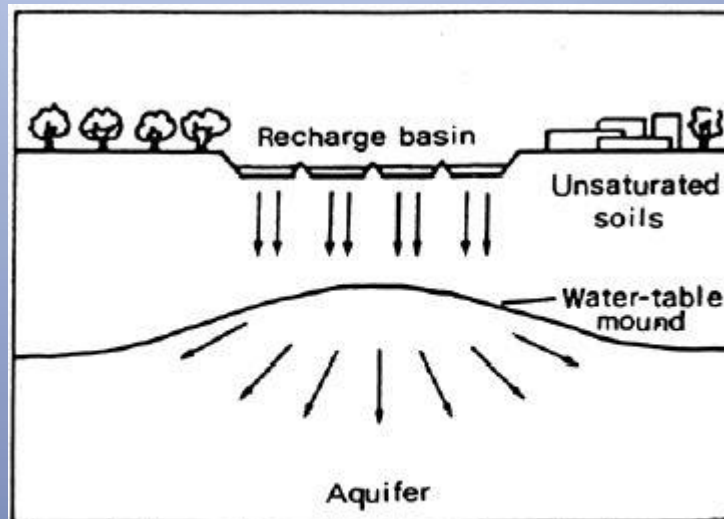


Figure 1: Flow of water from a recharge basin through the unsaturated zone, after Pizzulli (1999).





# Contour farming conversions





# Summer is for Pools!







**October 26, 2017**

San Antonio Creek discharge from Ojai Basin  
Flow over Bedrock